

Georgetown Bypass

Sound Attenuation Solutions



September 22, 2011

The Purpose of Today's Meeting

- To discuss the results of the March 10 meeting.
- To offer concept solutions based on the comments received.

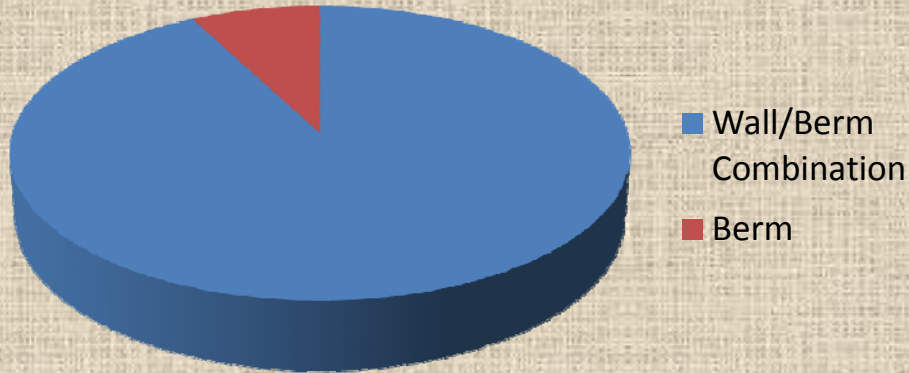
General Bypass Alignment



Results of Questionnaire -

Attenuation Method

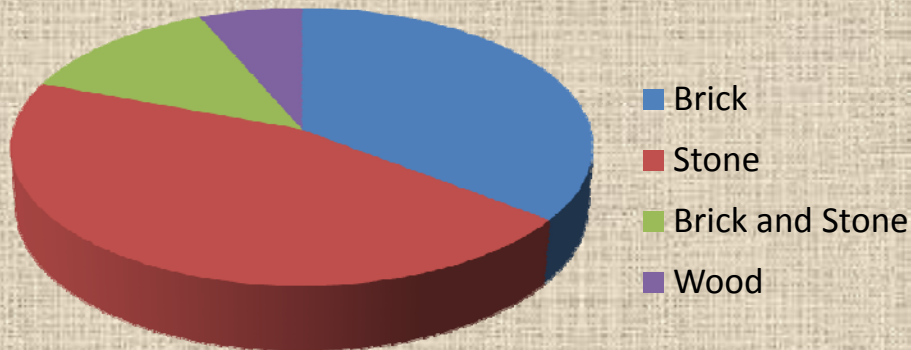
Canewood



Berm Type

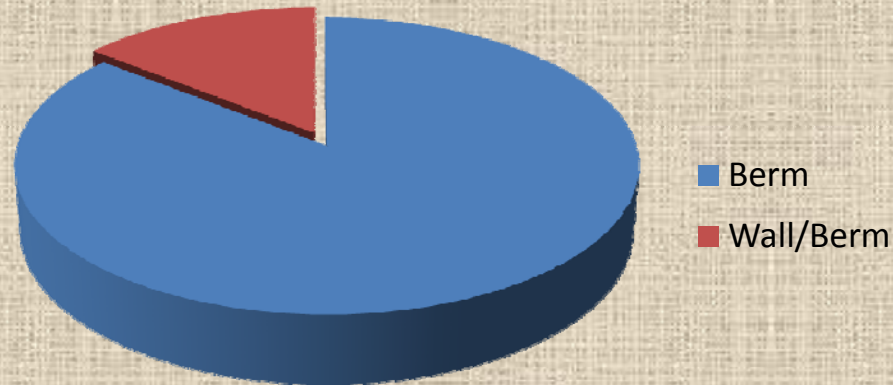


Wall Material

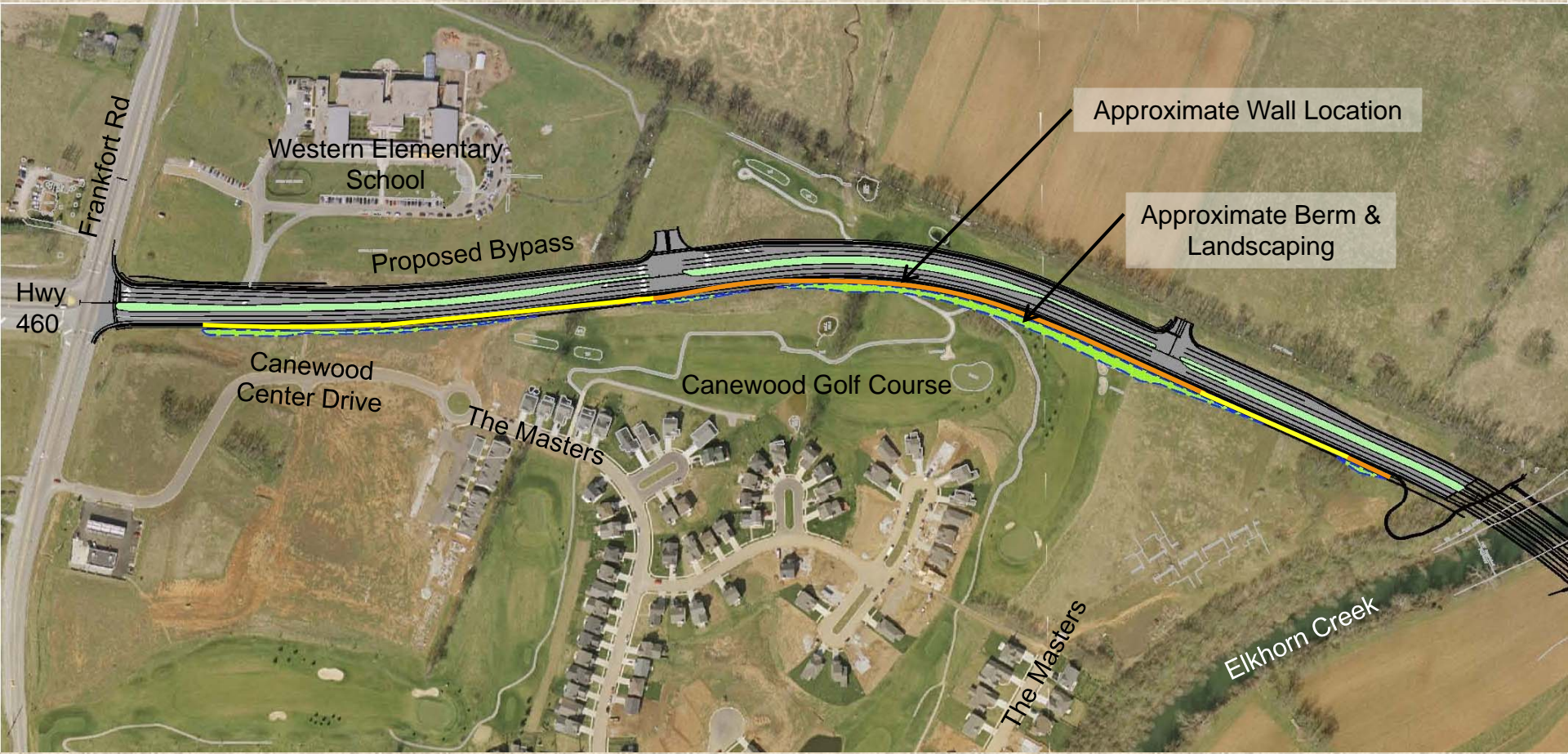


Results of Questionnaire – Derby Estates

Attenuation Method



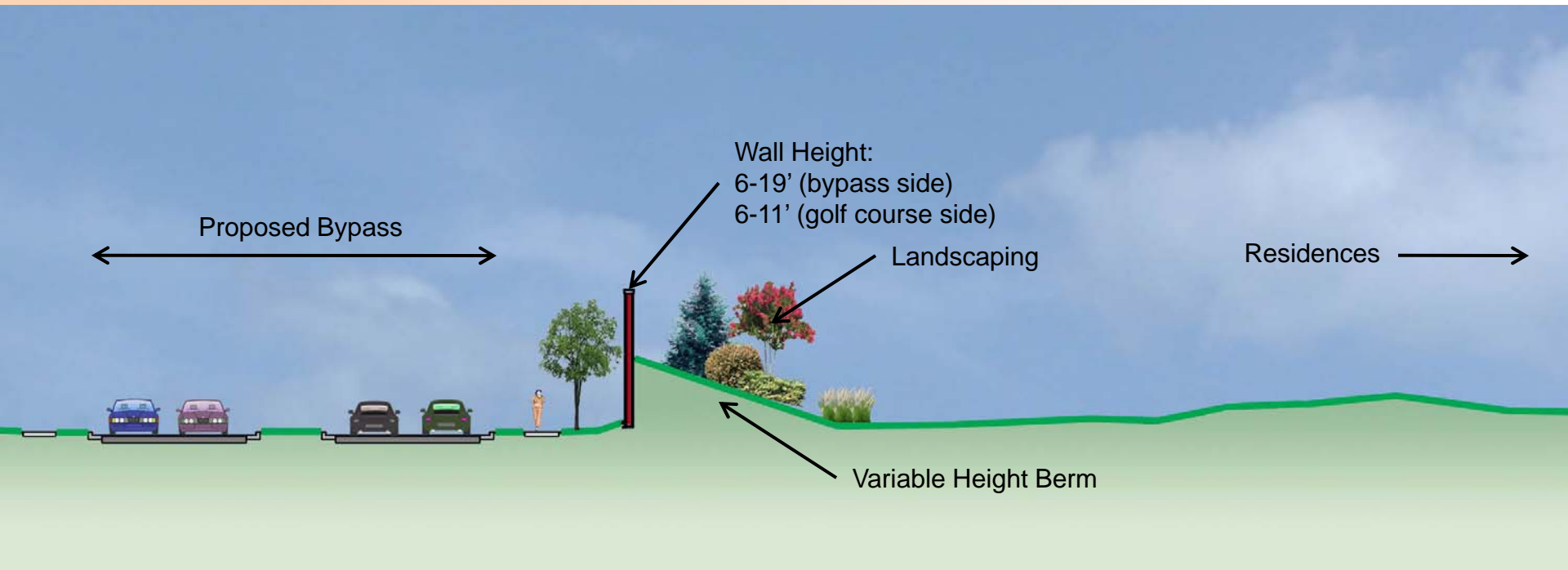
Proposed Location of Wall and Berm – Canewood Subdivision



LEGEND	
6'-9' tall wall	
10'-11' tall wall	



Retaining Wall / Berm Combination with Landscaping

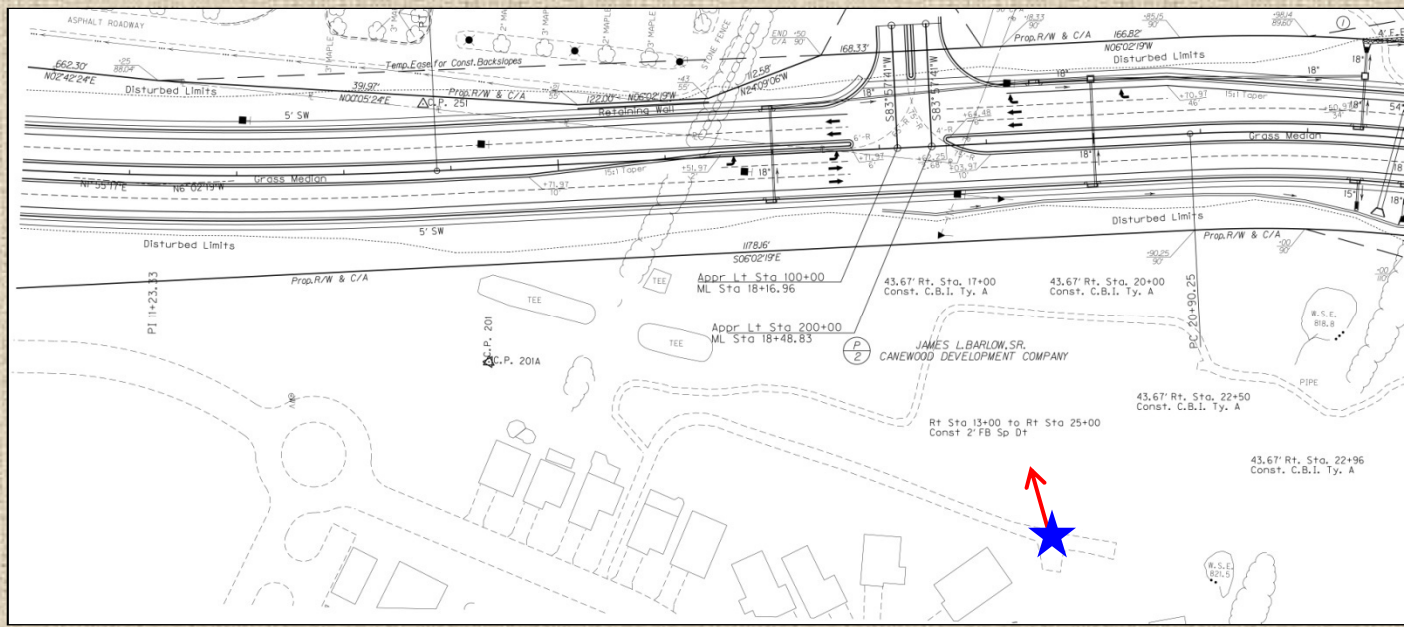


- Previous Alternate “4B” as preferred by majority of neighborhood residents
- Allows for an undulating berm of variable height as preferred by majority of neighborhood residents
- Offers a limited height of wall softened by landscape berm
- Maximizes sound attenuation and aesthetics while minimizing impact on golf course

Brick / Limestone Noise Wall



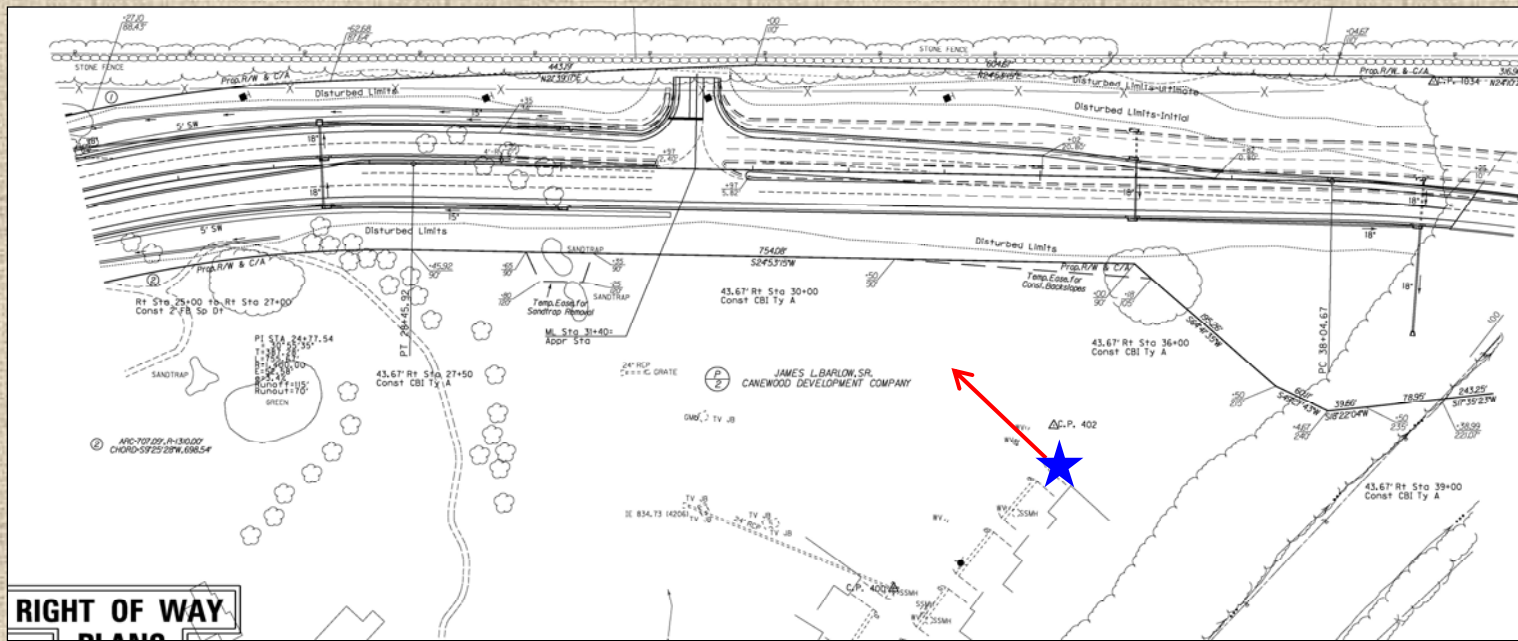
View From Residents Towards Bypass



View From Residents Towards Bypass



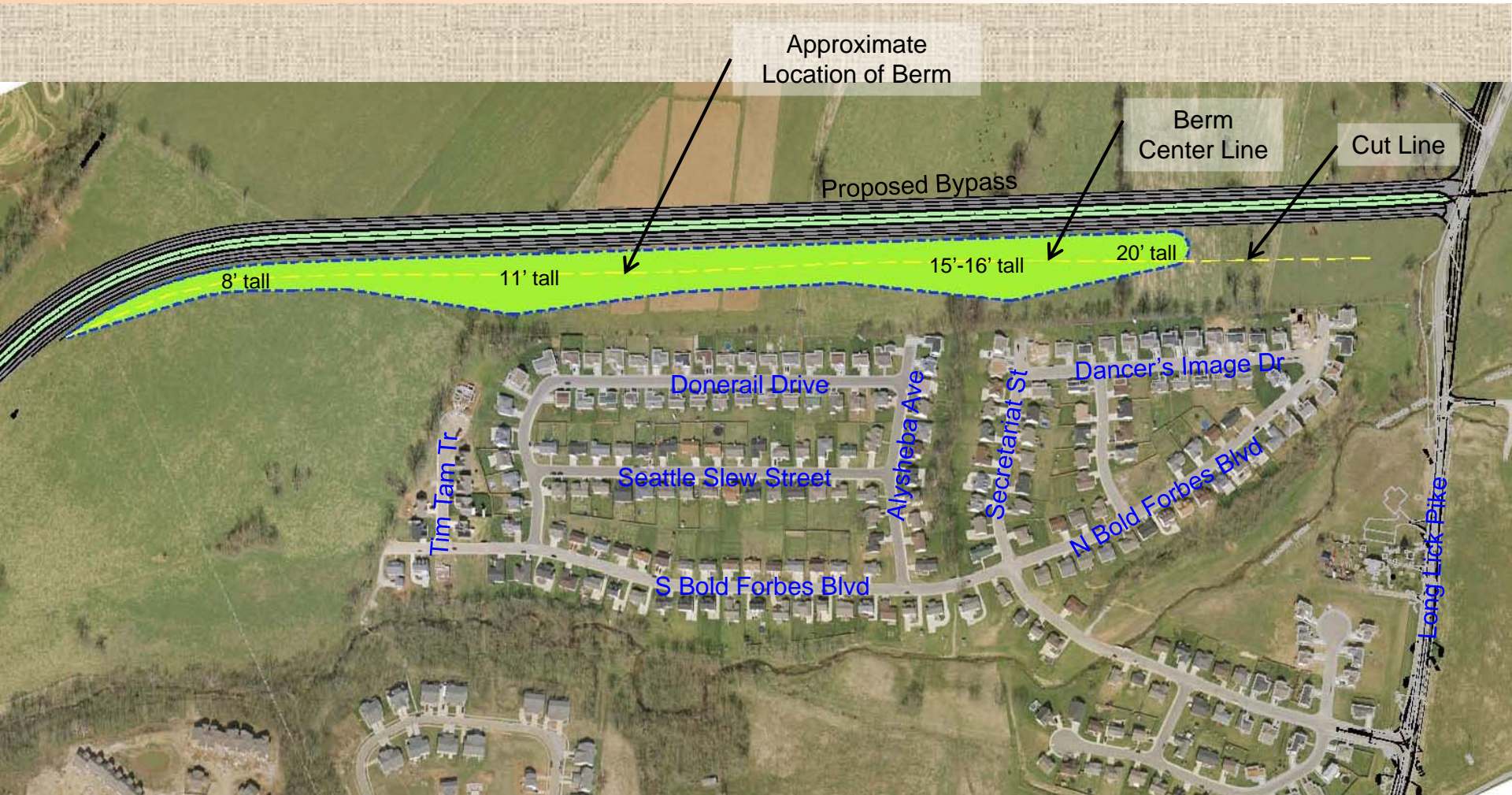
View From Residents Towards Bypass



View From Residents Towards Bypass



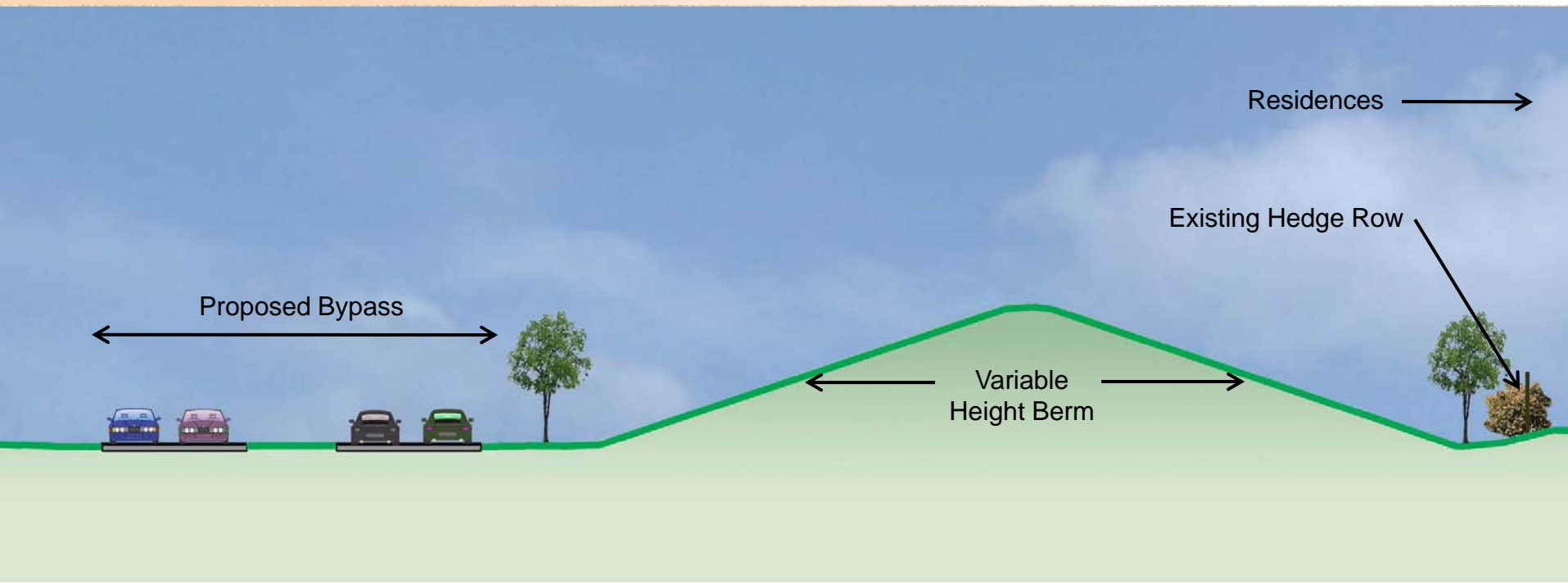
Bypass Alignment – Derby Estates Subdivision



NORTH



Berm with Landscaping



- Previous “berm only” (no wall) solution as preferred by majority of neighborhood residents
- Allows for an undulating berm of variable alignment and height which provides a more natural aesthetic
- Maximizes sound attenuation using available buffer between road and neighborhood

View From Residents Towards Bypass



Georgetown Bypass

Sound Attenuation Solutions



September 22, 2011